

**LUTON YOUTH OFFENDING TEAM**

**YOUTH JUSTICE PLAN**

**2002 - 2005**

**As required by Section 40  
Crime & Disorder Act 1998**

**A Partnership between Luton Borough Council, Bedfordshire Police Authority,  
Luton Primary Care Trust and National Probation Service Bedfordshire**



Submitted March 2002

## INDEX

	Page No
<b>Introduction</b>	2
<b>Approval of the Plan by Chief Officers</b>	4
<b>Section One: Executive Summary</b>	5
<b>Section Two: Performance Measures</b>	
Introduction	10
Outcomes: Measures One and Two	11
Service Development: Measures Eleven, Twelve and Thirteen	15
Quality of Service Provision: Measures Six, Seven, Eight and Nine	20
Outputs: Measures Three, Four and Five	25
<b>Section Three: The Management and the Resourcing of the Youth Offending Team</b>	29
<b>ANNEX A:</b>	
Table 20: Re-offending Following Pre Court Decisions (First Cohort)	36
Table 20A: Re-offending Following Pre Court Decisions (Second Cohort)	37
Table 21: Re-offending Following Sentence (First Cohort)	38
Table 21A: Re-offending Following Sentence (Second Cohort)	39
Table 24: Workload Measures/Performance Measures	40
Table 24a: The Thirteen Performance Measures	43
<b>ANNEX B: Targets 2002-2005</b>	47

## INTRODUCTION

---

The Crime and Disorder Act 1998 places a duty on local authorities to ensure the provision of appropriate youth justice services through the establishment of a Youth Offending Team. The Health Authority, Probation Service and Police Authority are required to co-operate with the local authority to ensure such services are available and by seconding staff to the Youth Offending Team.

Each year the local authority is required to produce and implement a Youth Justice Plan which sets out how youth justice services are to be provided and funded, how the Youth Offending Team is composed, how it operates and the functions it carries out. This is the third Youth Justice Plan that has been produced. This plan, unlike the others, covers a three year period 2002-2005. However the main focus is on the strategic and operational planning for April 2002 to March 2003.

The overall cost of crime in England and Wales is estimated at around £60 billion. The response to crime by the criminal justice system contributes around 20% of the total cost, at around £12 billion, while the cost to the Health Service is estimated at £1.3 billion. The Audit Commission reported that identifying a single young offender costs the police £1200 and successful prosecution a further £2500.

Additionally there has been a growing recognition of the cost of anti-social behaviour originating in childhood, anticipated to cost £79,000 per individual between ages 10 and 28 years. While the criminal justice agencies accounted for nearly two thirds of this cost, the next costliest areas were Education, Social Services and Health. Clearly therefore it is in all agencies best interests to work collectively towards the reduction and prevention of youth crime.

The Youth Justice Board for England and Wales has established thirteen Performance Measures for Youth Offending Teams which link with the six national objectives established by the Crime and Disorder Act. Section Two of this plan details how Luton Youth Offending Service together with its partners, intends to meet these related targets.

The Performance Measures have been divided into four distinct groups:

### **Outcomes: Measures 1 and 2**

Concentrating on the effectiveness of the Youth Offending Service to reduce the level of youth crime and the rate at which young people are involved in further offending.

## **APPENDIX B**

### **Service Developments: Measures 11, 12 and 13**

- Addressing those factors – outside of the sole responsibility of the Youth Offending Service – that are likely to impact on a young person’s propensity to commit further offences ie:
  - education, training and employment;
  - accommodation;
  - child and Adolescent Mental Health.

### **Quality of Service: Measures 6, 7, 8, 9 and 10**

- Concerned with the satisfaction victims and parents have with the service and the overall quality of the Youth Offending Service.

### **Outputs: Measures 3, 4 and 5**

- Increasing, the frequency and extent to which community based services are provided.

The Plan sets out the tasks to be undertaken and the challenges that need to be met for the Youth Offending Service – and its partners – to have a significant impact on the reduction and prevention of youth crime in Luton.

**Mike Thomas**  
**Head of Youth Offending Service**

## APPROVAL OF THE PLAN BY CHIEF OFFICERS

---

### Luton Youth Offending Service Unique Identifier 103611

**Contact Person for the Plan:** Mike Thomas  
Head of Youth Offending Services  
16 Rothesay Road  
Luton  
LU1 1QX  
  
Tel No: 01582 547900  
Fax No: 01582 547901  
e mail: thomasm@luton.gov.uk

### Organisations Participating in the Youth Offending Team:

- Luton Borough Council  
Housing and Social Services  
Lifelong Learning
- Bedfordshire Police Service
- National Probation Service (Bedfordshire)
- Bedfordshire Health Authority
- Bedfordshire Victim Support
- Spurgeons Child Care
- RPS Rainer

### Chief Officers Approval of the Youth Justice Plan

	Name of Chief Officer	Signature	Date
Chief Executive Luton Borough Council	Darra Singh		
Corporate Director Lifelong Learning	Tony Dessent		
Chief Executive Bedfordshire Health Authority	Andrew Reid		
Chief Executive Luton Primary Care Group	Regina Shakespeare		
Divisional Commander Bedfordshire Police	Brian Minihane		
Chief Probation Officer National Probation Service (Bedfordshire)	John Scott		
Corporate Director Housing and Social Services	Hugh Dunnachie		

## SECTION ONE: EXECUTIVE SUMMARY

---

The principal aim of the youth justice system established by Section 37 of the Crime and Disorder Act is to prevent offending by children and young people. All those working in the youth justice system, including youth offending teams, are required to have regard to that aim. In order to achieve this the government has established the following six objectives.

- the swift administration of justice so that every young person accused of breaking the law has the matter resolved without delay;
- confronting young people with the consequences of their offending, for themselves and their family, their victims and their community and helping them to develop a sense of personal responsibility;
- interventions which tackle the particular factors (personal, family, social, educational and health) that put the young person at risk of offending;
- punishment proportionate to the seriousness and persistence of offending;
- encouraging reparation to victims by young offenders;
- enforcing the responsibility of parents.

The Youth Justice Plan for 2001-2002 established a number of supporting objectives designed to assist the service in achieving the overall aim.

### **Swift Administration of Justice**

The establishment of the Youth Court Action Group (YCAG) with representatives from the Police, Courts, Crown Prosecution Service and Youth Offending Services across Luton and Bedfordshire has ensured that regular reviews take place associated with the swift administration of justice. The local target was set at 50% of persistent young offenders to be dealt with within 51 days of arrest and 70% of all other young offenders dealt with within 71 days. The target for Persistent Young Offenders was met each month for 2001 and that for other young offenders met on 9 out of 12 months. The YCAG is regularly reviewing progress towards the targets and refining procedures to ensure everything possible is being done to meet these targets.

### **Confronting Young People with the Consequences of their Offending**

The work carried out by the Youth Offending Team continues to be in line with National Standards. The establishment of fortnightly 'case discussion' meetings involving all staff from the Youth Offending Team, in accordance with National Standard 7.2.8 'Team Review', has ensured that consideration is given to the skills and resources that might be available from all partner agencies in drawing up every Supervision Plan.

## **APPENDIX B**

In addition, a service level agreement with Victim Support has ensured that all victims of crimes committed by children and young people, where the Youth Offending Team might be involved, are contacted in order that consideration might be given to reparation being made available.

### **Intervention to Tackle Risk Factors**

The Youth Justice Service has continued to develop in partnership with Luton Borough's Community Safety Strategy. The Crime and Disorder Executive continues to operate as the Youth Offending Team Strategic Management Group which ensures that all agencies are committed to this joint approach. Indeed this has been further enhanced recently with the addition of the local Drug Action Team which now meets at the same venue on the same day as the Crime and Disorder Executive and ensures that linkages are made between all three groups.

Recent discussions across all agencies about the issues associated with nuisance youths has led to the creation of the Youth Intervention Group (YIG) which meets on a monthly basis to share information on those young people coming to the attention of the police for 'sub criminal' behaviour.

### **Punishment Proportionate to the Seriousness of the Offence**

All Pre Sentence Reports presented to the court continue to be rigorously gatekept within the Youth Offending Team to ensure consistency and equality. In addition the fortnightly 'case discussion' meetings provide opportunities for consultation within the team on PSR proposals and Supervision Plans.

The development of the final warning scheme continues to build naturally on the success of the Youth Diversion Scheme. Assessments are carried out on all cases where the police decide a final warning is appropriate. The police officer seconded to the Youth Offending Team is responsible for administering the warning, together with a member of the Youth Offending Team when an intervention programme is to be offered.

### **Encourage Reparation to Victims**

Restorative Justice principles continue to underpin all intervention programmes. A service level agreement has been established with Victim Support who undertake all 'first point of contacts' with victims, with reparation offered on all occasions. While there has been little take up in direct face to face contact between victim and offender, letters of apology continue to be exchanged. In recent months work has started on adopting the principles of family group conferencing and this will be given high priority during the coming months.

## APPENDIX B

### Reinforcing the Responsibilities of Parents

Luton Youth Offending Team has managed Parenting Orders since September 1998, initially as a Pilot Youth Offending Team. Since that time a service level agreement has been established with Spurgeons Childcare to develop groupwork programmes with parents on both a statutory and voluntary basis. Comprehensive assessments continue to be carried out on the suitability of Parenting Orders whenever a young person is sentenced with the information detailed within the Pre Sentence Report. Similar assessments are carried out when parents are prosecuted for failing to ensure their children receive education, and whenever an Anti Social Behaviour Order is applied for on a child or young person.

A recent initiative with the local On Track scheme will see the development of additional support for parents from Asian communities which will enable the Youth Offending Team to introduce culturally sensitive parenting programmes.

In addition the ISSP includes the opportunity to use a Systemic Family Therapy model to explore the family dynamics of those young people subject to an ISSP programme.

### Statistical Summary

During 2001, 910 young people were responsible for 1402 offences, compared with 788 young people during 2000 who were responsible for 1215 offences.

### Annual Offending Rate - 2000 and 2001

Offence	2000	2001
Violence against person	110	133
Sexual offence	12	8
Death by Reckless	0	1
Robbery	16	44
Burglary	51	40
Vehicle Theft	132	104
Motoring Offences	365	381
Theft and Handling	265	386
Fraud and Forgery	18	28
Arson and Criminal Damage	65	107
Drugs	31	36
Public Order	27	28
Other	64	47
Racially Aggravated	3	4
Breach of Order	56	55
	<b>1215</b>	<b>1402</b>

Violence against the person increased by 23 during 2001 to 133 offences compared with 110 during 2000. Equally, offences of Robbery showed a substantial increase of



## APPENDIX B

28 offences from 16 during 2000 to 44 during 2001. Theft and Handling increased by 121 offences while Arson and Criminal Damage increased by 42 offences. By comparison sexual offences fell from 12 offences during 2000 to 8 in 2001. Burglary reduced from 51 offences during 2000 to 40 during 2001 and Vehicle Theft also fell from 132 during 2000 to 104 offences last year.

The peak age of male juvenile offending remains at 17 years with 39% of offences committed by this age group compared with 37% during 2000. The peak age for female offenders however appears to have dropped to 13 years from 15 years with 21% of offences committed by this age group. The overall percentage of offences committed by females has increased to 20% of the juvenile total, from 15% the previous year.

With regard to the outcomes faced by young people during 2001, 901 juveniles were dealt with by the criminal justice system with 354 receiving a police reprimand, 142 received a Final Warning (of which 94 received a Programme of Intervention) and 405 were charged with an offence and subsequently appeared before the courts.

The pattern of sentencing by the Court remained very similar during 2001 as that in 2000, as can be seen from the following table.

**Sentencing Table**

<b>Court Disposals</b>	<b>2000</b>	<b>2001</b>
Sentence Referred	1	1
Absolute Discharge	5	2
Conditional Discharge	67	59
Fine	53	53
Bind Over	3	2
Compensation Order	3	1
Reparation Order	0	1
Action Plan Order	20	22
Attendance Centre Order	32	25
Supervision Order	49	46
Supervision Order and Conditions	1	1
Probation Order	3	6
Probation Order and Conditions	2	1
Community Service	19	27
Combination Order	11	11
Drug Treatment and Testing Order	0	0
Curfew Order	0	3
Detention and Training Order/Section 91	55	34

The major change is in the use made of custodial sentences, which fell from 55 in 2000 to 34 during 2001, a reduction of 62%. In addition Conditional Discharges fell from 67 in 2000 to 59 during 2001, Attendance Centre Orders fell from 32 to 25 in

## **APPENDIX B**

2001, while Community Punishment Order (formerly Community Service) increased from 19 in 2000 to 27 during 2001.

### SECTION TWO: PERFORMANCE AND MEASURES

---

#### Introduction

This section of the Plan is designed to provide a clear association between the service and the thirteen performance measures which the Youth Offending Service is required to achieve during 2002-2005. Detailed commentary is based on year one (2002-2003), with additional information relating to how targets for years 2003-2005 will be met.

The measures are not presented in chronological order, but are considered in the groupings outlined in the introduction to the Plan:

<b>Outcomes</b>	-	Measures One and Two
<b>Service Development</b>	-	Measures Eleven, Twelve and Thirteen
<b>Quality of Service Provision</b>	-	Measures Six, Seven, Eight and Nine
<b>Outputs</b>	-	Measures Three, Four and Five

The commentary relating to each measure is divided into three sub sections.

#### Performance Review

Reviewing performance of the Youth Offending Service Partnership during the current financial year, therefore providing a baseline against which progress towards the target can be measured.

#### The Plan

Indicating how the Youth Offending Service will be delivering and commissioning services relating to the targets during the three year period (2002-2005).

#### Linkages

Clarifying where accountability rests for progressing towards the target and identifying other agencies and initiatives which may impact upon the target.

## OUTCOMES: MEASURES ONE AND TWO

### Measures One and Two: Prevention of Offending and Re-Offending

#### Measure One

To reduce the involvement, when compared to the baseline figure provided for the calendar year 2001, of young people usually resident in Luton who received a substantive outcome for the following offences:

<b>Vehicle Crime</b>	by 20%	-	2003	
	by 30%	-	2004	
Baseline figure	2001	-	104	
Target	2003	-	83	(reduction of 20% = 21)
	2004	-	73	(reduction of 30% = 31)
<b>Domestic Burglary</b>	by 8%	-	2003	
	by 16%	-	2004	
	by 25%	-	2005	
Baseline figure	2001	-	11	
Target	2003	-	10	(reduction of 8% = 1)
	2004	-	9	(reduction of 16% = 2)
	2005	-	8	(reduction of 25% = 3)

#### Measure Two

To achieve a reduction in re-offending rates with respect to each of the following four populations:

##### Pre Court

(Reprimands and Final Warnings)

##### First Tier Penalties

(Discharges, Fines, Bind Overs, Compensation, Referral and Reparation Orders)

##### Community Penalties

(Attendance Centre, Action Plans, Supervision Orders, Community Punishment Orders, Community Rehabilitation Order, Community Punishment and Rehabilitation Order, Drug Treatment and Testing Orders and Curfew Orders)

## APPENDIX B

### **Custodial Penalties**

(Section 92 and Detention and Training Orders)

Target reduction of 3% by 2003

5% by 2004

### **Baseline Figure 2001**

Pre Court	31 out of 121	ie 25%
First Tier Penalties	14 out of 33	ie 42%
Community Penalties	22 out of 34	ie 65%
Custodial Penalties	7 out of 13	ie 54%

### **Target 2003**

Pre Court	30	(reduction of 3% = 1)
First Tier Penalties	13	(reduction of 3% = 5)
Community Penalties	21	(reduction of 3% = 1)
Custodial Penalties	7	(reduction of 3% = <1)

### **Target 2004**

Pre Court	29	(reduction of 5% = 2)
First Tier Penalties	13	(reduction of 5% = 1)
Community Penalties	21	(reduction of 5% = 1)
Custodial Penalties	7	(reduction of 5% = <0.5)

## **Measures One and Two**

### **Performance Review**

- The Youth Offending Service has developed a range of programmes which are available at every stage of the youth criminal justice system.
- All staff have undergone training in Brief Therapy and Family Group Conferencing and these techniques form a fundamental basis for all interventions.
- With specific reference to offences of Burglary, specialist intervention programmes have been developed based on the 'Targets for Change'.
- The Community Auto Training Scheme continues to be widely used for those young people who have a particular interest in motor mechanics, including those convicted of car related offences.
- Discussions have taken place with the police around joint work for those young people convicted of robbery offences.

## APPENDIX B

- The Youth Inclusion Programme continues to work with the 50 most 'at risk' young people in the Bury Park area of the town.
- An Intensive Supervision and Surveillance Programme is in place to provide intensive input and support for those young people persistently committing serious offences.
- A core skills groupwork programme has been developed and is available to all young people known to the Youth Offending Service. Topics covered include anger management, offending behaviour, sexual behaviour.
- The Coldingley Prison Diversion Scheme aims to divert young people away from crime and drug misuse. The event is run by prison inmates and takes the form of an educational visit. Drama is the main theme of the presentation and the young people are encouraged to take part in offending behaviour role plays. Inmates give their personal testimonies and there is opportunity for questions and discussion. The young people are also shown around the prison and get an insight into the realities of prison life. Since 1998 62 young people from Luton have attended .

### Plan 2002-2003

- By making use of the data supplied by ASSET, develop specific programmes related to the risk factor identified.
- Develop specific intervention programmes associated with offences of Burglary and Vehicle Crime - to be in place by 2003.
- Further develop programmes for those young people associated with offences of Robbery, with the aim of reducing the numbers of young people so involved by 15% in 2005 (5% in 2003, 10% in 2004). Baseline figure for 2001 is 44 young people.
- Carry out a further review of young people involved in the Youth Inclusion Programme to ensure the 50 most 'at risk' are targeted.
- Carry out a youth crime audit using information contained on the YOIS database in order to identify those offences that are increasing with a view to targeting specific resources.
- Continue to use the multi-agency Youth Intervention Group as a forum for discussing those young offenders who are causing most concern.
- Further develop the core skills groupwork programme.
- The introduction of a dedicated drugs worker for the YOT in 2002, in partnership with Plan B, will allow access to Tier One and Tier Two services to be developed.
- Consideration will be given to the realignment of Youth Offending Services to become co-terminus with the Six Area Committees introduced within the Borough, following the undertaking of a feasibility study.

### Linkages

- Drug Action Team
- Young Peoples Substance Misuse Planning Team
- Area Child Protection Committee
- ISSP Management Board
- YIP Steering Group
- Area Criminal Justice Liaison Committee
- Joint Planning Team
- Youth Court Users Group
- Multi-Agency Police Protection Panel

## APPENDIX B

### SERVICE DEVELOPMENT: MEASURES ELEVEN, TWELVE AND THIRTEEN

These three measures relate to services whose responsibility lies outside of the Youth Offending Service itself, being either with those agencies represented in the Youth Offending Service Partnership or in other local partnerships. Use of the ASSET assessment tool will identify need and trigger the referral process through to partner agencies.

#### Measure Eleven: Education, Training and Employment

Ensure 90% of young offenders supervised by the Youth Offending Service are in either full time education, training or employment by 2004 (80% by 2003).

Baseline	2001	33%
----------	------	-----

Target	2003	80%
	2004	90%

#### Performance Review

- The Youth Offending Service continues to be an active member of the Pupil Consultation Panel and this provides a forum to discuss those young people known to the Service who are not in full time education.
- CfBT continues to provide invaluable support through having a member of staff based with the Youth Offending Service one afternoon each week to offer careers advice.
- The target of 90% in full time education, training or employment is a cross cutting performance indicator within the Connexions Service. Initial discussions have already taken place to look at the interface between the role of the Personal Advisor and Responsible Officer within the Youth Offending Service.

#### Plan 2002-2005

- Recent agreement with the Learning and Skills Council will result in a number of additional opportunities being available including:
  - regular information on the different types of education provision funded by the Learning and Skills Council;



## APPENDIX B

- details of the providers offering each of the different types of education and training programmes;
- opportunities to make links with a range of education and training providers;
- opportunities for joint development activities, particularly in relation to the Learning Gateway and Life Skills programmes within work based learning;
- information on discretionary funding.
- The development of a cross council strategy - Corporate Action Schools - aimed at providing support to Luton schools which are 'additionally challenged' will impact on the target. The Youth Offending Service is a partner in this initiative.

### Linkages

Accountability for the delivery of this target is outside the sole remit of the Youth Offending Service and rests with the Youth Offending Service Partnerships, especially with Life Long Learning and the Connexion Service.

### Measure Twelve: Accommodation

Ensure all youth offending teams have a named accommodation officer and all young people subject to either a community intervention or on release from the secure estate have satisfactory accommodation to go to.

### Baseline Figure

Using ASSET assessment, 24 out of 107 young people subject to a community intervention or released from the secure estate were in living arrangements either strongly or very strongly associated with their offending, ie 22%.

Target	2003	90% in satisfactory accommodation
	2004	95% in satisfactory accommodation

### Performance Review

- The Youth Offending Service was successful in its bid to the Youth Justice Board in October 2001 to establish an accommodation strategy with Signposts (Luton and Dunstable). This provides access to two bed spaces together with the establishment of an Outreach Support Worker who will work in partnership with the Youth Offending Service to identify and support young people whose offending

## APPENDIX B

behaviour may have been affected by their inability to access or maintain suitable accommodation.

- The ability to place remanded young people in suitable accommodation has been hampered by the difficulty in recruiting a Remand Foster Carer.
- The dramatic reduction in the number of those young people having been remanded in custody from 30 episodes in 2000 to 16 in 2001 has been due in part to the success of the Bail Support Team in locating alternative accommodation for vulnerable young people.
- A part time Accommodation Officer post has been included as part of the ISSP initiative in recognition of the accommodation needs of the most persistent 16 and 17 year old offenders.

### Plan 2002-2005

- The introduction of Transitional Housing Benefit may provide an unique opportunity to increase the range of supported housing schemes available locally. Discussions will take place with the local Supporting People Initiative and Housing Association to gauge the support for such a scheme.
- The Accommodation Officer will ensure that the accommodation needs of young people known to the Youth Offending Service are given high priority.
- Further discussions will take place with Housing and Social Services Department to recruit to the specialist Remand Foster Carer vacancy.

### Linkages

- Housing and Social Services
- Voluntary Housing/Association Providers

### Measure Thirteen: Mental Health

All young people, by 2004, who are assessed by ASSET (and when available using the Mental Health Assessment Tool) as manifesting:

- Acute mental health difficulties to be referred by the Youth Offending Service to the Child and Adolescent Mental Health Service (CAMHS) for a formal assessment commenced within 24 hours of the receipt of the referral with a view to their receiving either a tier three or four service;
- Non acute mental health concerns to be referred by the Youth Offending Service to CAMHS for a formal assessment commenced within 10 working days of the receipt of the referral with a view to their receiving a tier one or tier two service.

## APPENDIX B

Currently there is no baseline measure for this objective.

### Performance Review

During 2001 the Health Representative within the Youth Offending Service carried out a health assessment on all referrals received from April to June. Of the 50 young people referred, 29 (58%) agreed to an assessment. The information received suggested that both the young people and their immediate family members have significant unmet emotional and mental health needs.

24 (83%) young people appeared to have significant emotional and mental health needs, by:

Anger/Aggression	17
Drug Misuse	7
Depression	6
Physical Abuse	6
Bullied	6
Anxiety	4
Self Harm	3
Sleep Walkers	3

Among immediate family members 20 (71%) had similar problems:

History of Domestic Violence	10
Depression	7
Alcohol Dependency	5
Physically Aggressive	6
Heroin Addiction	2
Victim of Sexual Abuse	1
Schizophrenia (untreated)	1

Many of the families reported a history of contact with one or more services providing support around child behaviour problems but few say they found them beneficial.

### Plan 2002 - 2003

- Introduce Youth Justice Board Mental Health Assessment Tool.
- Consider CAMHS training programme for staff.
- Establish within the Youth Offending Service a tier one awareness package for young people around mental well being.
- Further develop links between Youth Offending Service and Health Visitors/School Nurses re primary health care needs of young people known to the Service.

## **APPENDIX B**

- Young Persons substance misuse plan includes new initiatives aimed at meeting the needs of young people who are, or are at risk of, misusing drugs and alcohol.

### **Linkages**

Key strategies include:

- CAMHS Strategy
- Young Persons Substance Misuse Plan.

## **APPENDIX B**

### **QUALITY OF SERVICE PROVISION: MEASURES SIX, SEVEN, EIGHT AND NINE**

#### **Measure Six: Victim Satisfaction**

Ensure that 70% of victims by 2004 who have either been consulted or who participated in restorative process are either satisfied or very satisfied with the outcome.

There is currently no baseline data available for this measure.

#### **Performance Review**

At present the Youth Offending Service has no means of measuring victim satisfaction. However there is a Service Level Agreement with Victim Support who carry out initial contact with victims on behalf of the Youth Offending Service. During 2001 there were 256 referrals through to Victim Support of which there were 143 identified victims. The main reason for not making a referral was either no identified victim (57) or a corporate victim (43). Of the identified victims, 55 were linked to Final Warnings Assessments and 73 were following reports requested by the Court

#### **Plan 2002-2005**

- Develop a victim satisfaction monitoring form.
- Redesign Victim Contact leaflet with Victim Support.
- All staff to receive Restorative Justice training during 2002.
- Sessional staff to receive Risk Awareness training during 2002.
- Reparation Co-ordinator to be appointed (September 2002).
- Consider the outcome of Victim Satisfaction survey commissioned by Victim Support (July 2002).

#### **Linkage**

- Service Level Agreement with Victim Support.

### Measure Seven: Parental Satisfaction

Ensure with respect to parents leaving parenting programmes (voluntary and statutory) at least 70% complete them.

Of those parents who complete an agreed programme at least 70% are satisfied, or very satisfied, with the programme.

#### Baseline Data 2001

Number of parents starting parenting programme	33
Number of parents completing programme	25 ie 76%

#### Performance Review

- During 2001 the Youth Offending Service commissioned a piece of work to consider the impact of both statutory Parenting Orders and voluntary input with parents during the period September 1998 - April 2001. Initial findings indicate that 87% found the parenting groups helpful and that 69% had their expectation met by attending the group. A number of the parents identified that the classes had helped them to deal with problems arising with younger members of the family. With regard to future planning, 60% said that they wanted a self support group to be established, and 60% also wanted telephone support to be available. 56% said that they would welcome the opportunity for one to one support from a parenting facilitator. Additionally a need was identified for parenting support to be specifically available for those parents where English was not their first language.
- Alongside this the Youth Offending Service has received funding through the local On Track initiative for three years to run parenting programmes to parents of South Asian origin living within the On Track area of Luton, as this population is not accessing current services. Parent support workers with a fluency in either Bengali or Urdu will be trained to provide a home visiting programme together with parenting classes.

#### Plan 2002-2005

- Develop Parental Satisfaction form.
- Review provision of support for parents, based on findings of report.
- Further develop links across with On Track through the Bury Park parenting initiative.
- Continue to assess the impact of the Systemic Family Therapy Initiative developed through the ISSP.

## APPENDIX B

- Review current arrangements with Spurgeons Child Care and the provision of a Parenting Co-ordinator.

### Linkages

- On Track
- Housing and Social Services
- Service Level Agreement with Spurgeons Child Care.

### Measure Eight: ASSET

Ensure Asset is completed for **all** young people subject to both:

- Community disposals during assessment and closure stages; and
- Custodial sentences at the assessment, transfer to the community and closure stages.

### Baseline Data 2001

Number of Community Disposals starting	208
Number of start ASSETs completed	205
Start ASSET completion rate (%)	99%
Number of Community Disposals concluding	168
Number of end ASSETs completed	102
End ASSET completion rate (%)	61%
Number of DTOs starting	32
Number of start ASSETs completed	26
DTO start ASSET completion rate (%)	81%
Number of young people transferred back to community	29
Number of transfer ASSETs completed	28
Transfer ASSET completed (%)	79%
Number of Detention and Training Orders concluded	19
Number of end ASSETs completed	15
Detention and Training Orders ASSET completion rate	79%

### Performance Review

The recent review of ASSET has indicated a less than satisfactory completion of ASSET once an intervention programme has been completed (61%). The newly appointed Monitoring and Evaluation Officer will monitor ASSETs on a regular basis and report each quarter on current performance.

### Plan 2002 - 2005

- Further training for all staff to ensure consistency of initial assessments.
- Greater use made of findings from ASSET for local programme planning through quarterly reporting.

### Measure Nine: Pre Sentence Reports

Ensure 90% of Pre Sentence Reports prepared for courts are submitted within the timescales presented by National Standards.

### Baseline 2001

Number of Pre Sentence Reports submitted to Courts	115
Number submitted within prescribed timescales	86
Percentage submitted within timescale	75%

### Performance Review

- The percentage of reports presented to the court within the prescribed timescale would appear to be below the timescale prescribed by National Standards (75% instead of the target of 90%). However this figure does not include those young people who have been sentenced using a previous Pre Sentence Report, as outlined in the protocol agreed with the Court. Such reports will now be included within the monitoring system.
- The introduction of pre-court meetings with the Court Clerk and the Crown Prosecution Service 30 minutes before each Youth Court hearing has provided a useful forum to ensure the availability of up to date information on each case, including the provision of Pre Sentence Reports and previous reports as appropriate.



## APPENDIX B

### Plan 2002-2005

- Ensure regular feedback to the Youth Court Action Group on Pre Sentence Report timescales.
- Continue to use the Youth Court Action Group as the appropriate forum for discussion any issues associated with the court process.

### Linkages

Youth Offending Protocol with Bedfordshire Magistrates Courts Committee.

### Measure Ten: Detention and Training Orders

Ensure that all initial training plans for young people subject to Detention and Training Orders are drawn up within the timescales prescribed by National Standards.

### Baseline 2001

Number of Detention and Training Orders starting	34
Number of initial training plans drawn up within timescales	27
Percentage submitted within National Standards timescales	79%

### Performance Review

- As with Performance Measures Eleven, Twelve and Thirteen, the prime responsibility for Measure Ten rests outside the immediate responsibility of the Youth Offending Service.
- The seven initial training plans that failed to meet National Standards occurred through difficulties arranging a mutually convenient date with the YOI.

### Plan 2002 - 2005

- Ensure consistency in chairing initial planning meetings through discussion with Onley Young Offenders Institution.
- Encourage parents and carers to attend all planning meetings and reviews and monitor performance.

### Linkages

- Youth Justice Board Corporate Plan.

### OUTPUTS: MEASURES THREE, FOUR AND FIVE

These measures relate to service outputs which have a clear policy context within the Government's Strategy to prevent and reduce youth crime.

#### Measure Three: Final Warnings

Ensure that:

70% by 2003

80% by 2004

of Final Warnings are supported by interventions.

#### Baseline Figure 2001

Total number of Final Warnings	142
Total number of Final Warnings supported by intervention programme	94
Percentage of Final Warnings supported by intervention programme	66%

#### Performance Review

The current procedure allows for multi-agency assessment to take place on all young people who the police consider suitable for a Final Warning. All intervention plans are agreed by a multi-agency Panel and a member of the Youth Offending Service is normally available when the Final Warning is given.

During 2001 66% of final Warnings included an intervention programme.

#### Plan 2002-2005

- Review current resources available for inclusion within Final Warning intervention programmes.
- Develop programmes consistent with factors highlighted through ASSET.
- Ensure full implementation of shortened version of ASSET.
- Increase, where appropriate, the involvement of Restorative Justice processes, including direct reparation, as part of the Final Warning intervention programme.

## Measure Four: Use of Secure Facilities

Reduce the use of the Secure Estate for:

- **Remands** to 30% of the total number of remand episodes involving Bail Supervision, Remand to Local Authority Accommodation, Court Ordered Secure Remand, Remand in Custody by 2004.
- **Custodial Sentences** to no more than 6% of the sentences imposed by 2004.

### Baseline Figure 2001

#### Remands

Total number of Remand episodes	47
Remand episodes recorded as Court Order Secure Remand or Remand in Custody	18
Court order Secure Remand or Remand in Custody as a % of Remand episodes	38%

#### Custody

Total number of sentences	293
Total number of custodial sentences	34
Custodial sentences as a % of all sentences	12%

### Performance Review

Although there is still some way to go in order to achieve the target set for 2004, the use of secure facilities has decreased dramatically compared to 2000. During 2000 there were 36 occasions where a young person was remanded to custody, this had reduced to 17 during 2001. Similarly in 2000 there were 55 young people sentenced to custody, while during 2001 this had reduced to 34. It would therefore appear that magistrates have greater confidence in the non-custodial programmes put together by the Youth Offending Service than previously.

It is anticipated that the recently introduced ISSP will further reduce the likelihood of young people being both remanded into custody and serving a custodial sentence.

### Plan 2002 - 2005

- The limited availability of a Remand Foster scheme has resulted in young people being remanded within the secure estate through lack of suitable accommodation. Attempts will once again be made to recruit a Remand Foster Carer.

## APPENDIX B

- Review current arrangements with Emergency Duty Team for the provision of information to the Court at weekends and bank holidays. Consideration will be given to the Youth Offending Service having its own dedicated Court Officers available during these times in order to reduce the likelihood of inappropriate remands being made due to lack of current information.
- Further develop the ISSP initiative and maintain the schemes profile to ensure it retains the confidence of the courts, continuing to provide a credible alternative to custody for the most serious and persistent offenders.
- Instigate a review process whenever a young person receives a custodial sentence.
- Review use made of information on ASSET when compiling intervention programmes.

### Linkages

- Housing and Social Services regarding the provision of alternative accommodation strategy.
- ISSP Steering Board.

### Measure Five

Ensure restorative processes are used in 60% of disposals by 2003 and 80% by 2004.

### Baseline Figure 2002

Total number of Final Warnings, Reparation Orders and Community Penalties	94
Total number including direct or indirect reparation	46
Percentage including reparation	48%

### Performance Review

As reflected elsewhere (Measure Six) the issue of victim engagement is one that needs to be seriously addressed. Currently the main form of restorative justice carried out is a letter of apology written to the victim, with very little direct reparation carried out.

## **APPENDIX B**

### **Plan 2002 - 2005**

- Appoint a full time Reparation Co-ordinator using Youth Justice Board core funding.
- Develop a comprehensive directory of reparation initiatives available locally.
- Develop, outside of the Service Level Agreement with Victim Support, a restorative justice initiative aimed at corporate victims.
- Review victim participation in Youth Offender Panels.
- Implement Family Group Conferencing pilot following completion of training (October 2002).

### **Linkages**

- Victim Support.

### **SECTION THREE: THE MANAGEMENT AND THE RESOURCING OF THE YOUTH OFFENDING TEAM**

---

#### **Management, Structural and Staffing Arrangements for the Youth Offending Service**

The Youth Offending Service Partnership is represented by the Youth Offending Strategic Management Group, which operates, together with the Drug Action Team, as a sub group of the Crime and Disorder Executive.

The overall management responsibility for the Youth Offending Service rests with the Crime and Disorder Executive Group, which fulfils the role of Youth Offending Strategic Management Group. This reflects Luton's desire that the aims and objectives for the Youth Offending Service should be an integral part of the Borough's overall Crime and Disorder strategy.

The Executive, which meets quarterly, is chaired by the Borough's Chief Executive and consists of Chief Officers from the local statutory agencies. In order for Luton to meet its duties under the Crime and Disorder Act a 3 tiered structure has been devised consisting of a Stakeholders Group, the Executive and 3 specific working groups.

Line management responsibility for the Head of Youth Offending Services rests with the Head of Children and Families, part of the Housing and Social Services Directorate within the Borough. However regular meetings take place with the Chief Executive, and the elected member within the Council who holds the Portfolio for Citizenship and Quality of Life.

#### **Youth Offending Strategic Management Group**

<b>Name</b>	<b>Post Held</b>	<b>Agency</b>
Mr Darra Singh	Chief Executive	Luton Borough Council
Chief Superintendent Brian Minihane	Bedfordshire Police	Divisional Commander
Mr Tony Dessent	Corporate Director Lifelong Learning	Luton Borough Council
Mr John Scott	Chief Probation Officer	Bedfordshire Probation Service
Mr Alan Marlow	Senior Development Fellow	The University of Luton
Mr Wes Cuell	Head of Children and Family Services	Luton Borough Council
Dr Marilyn Dyason	Justices Chief Executive	Bedfordshire Magistrates Court
Ms Joan Bailey	Programme Manager	Safer Luton Partnership
Ms R Shakespeare	Chief Executive	Luton Primary Care Group
Mr Andrew Reid	Chief Executive	Bedfordshire Health Authority
Mr Julian Sears	District Commander for Luton District	Luton Fire Services
Mr Mike Thomas	Head of Youth Offending Services	Luton Youth Offending Team
Ms Glynnis Allen	Strategic Development Manager	Luton Drug Action Team
Mr Hugh Dunnachie	Corporate Director, Housing and Social Services	Luton Borough Council
Mr Simon Daize	Partnership Officer	The Safer Luton Partnership

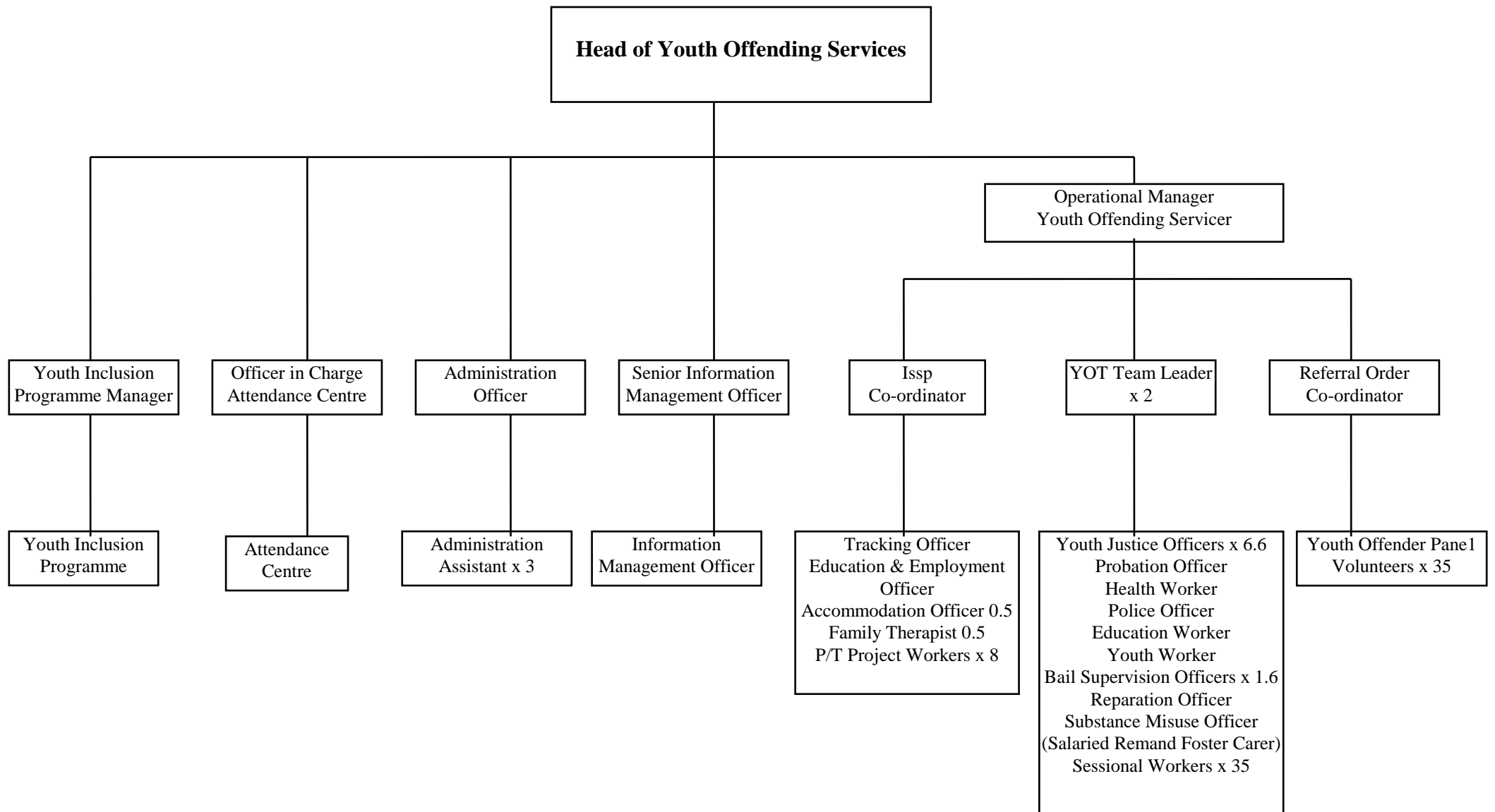
## APPENDIX B

The Head of Youth Offending Services is line managed by the Head of Children and Family Services, Housing and Social Services Department.

### STAFFING OF THE YOUTH OFFENDING TEAM

Position	No of Posts	Gender	Ethnicity
Head of Youth Offending Services	1	Male	White
Operational Manager	1	Female	White
Deputy Team Leader	1	Male	White
Social Services	8	Female x 6 Male x 2	White x 6 Black x 2
ISSP Co-ordinator	1	Male	White
Police	1	Male	White
Probation	1	Male	White
Health	1	Female	White
Education	1	Female	White
Administration	4	Female x 4	White x 2 Asian x 2
Youth Service	1	Male	Black
Information Manager	1	Male	White

# YOUTH OFFENDING SERVICE STRUCTURAL CHART





### **Staffing Arrangements**

All Youth Offending Service staff are currently based together in a centrally located office which allows ready access to a range of Borough Departments (including Housing and Social Services and Lifelong Learning), the central Police Station and the Youth Court. However, as a result of the successful bid to run an Intensive Supervision and Surveillance Programme, negotiations are underway for part of the team to move into a new building, which will be shared with Connexions, Youth Inclusion Programme and Safer Luton Partnership. The development of the ISSP team has allowed the opportunity to develop innovative programmes targeted at those young people most at risk of committing serious offences. This has included a systemic family therapy model working with the young person and their extended family, alongside electronic tagging and voice verification. In addition the Youth Offending Service has recently appointed a Referral Order Co-ordinator who will take responsibility for the development of Youth Offender Panels ready for the implementation of Referral Orders on 1 April. It is also anticipated that a dedicated substance misuse worker will shortly be in post.

The Service continues to benefit from the support offered by a large number of sessional workers who carry out a variety of individual tasks ranging from acting as appropriate adults at the Police Station, mentoring young people and offering support to parents.

### **Resourcing of the Youth Offending Service**

The Youth Offending Service has benefited from increased funding from the Youth Justice Board, primarily to establish the ISSP. However in addition funds have been made available to appoint a specialist substance misuse worker and Referral Order Co-ordinator. The Youth Inclusion Programme and Splash scheme are run by the Safer Luton Partnership, using Youth Justice Board funding, on behalf of the Youth Offending Service.

## APPENDIX B

**Table 27: Youth offending Service Budget 2002/2003 - Sources**

Agency	Staffing Costs	Delegated Funds	Total	%
Police	42300	50000	92300	6
Probation	28364	5000	32364	2
Social Services	481060	251930	732990	48
Education	47674		47674	3
Health	35000		35000	2
<b>Youth Justice Board</b>		(601644)		39%
• Core Funding			125195	
• Youth Inclusion Programme			68500	
• ISSP			320199	
• Substance Misuse			38006	
• Splash			14000	
• Referral Orders			35764	
<b>Total Budget 2002/2003</b>			<b>1541992</b>	

### Pooled Budget

In October 2001 the joint Youth Offending Service Chief Officers Group for Luton and Bedfordshire commissioned a detailed study considering the options available in setting up a pooled budget for both Luton Youth Offending Service and Bedfordshire Youth Offending Service. The study will also look at the feasibility of establishing a three yearly budget cycle. The report is nearing completion and in due course will be considered by the Strategic Management Group.

**Table 27b: Pooled Budget**

Agency	Amount
Police	50000
Probation	5000
Social Services	251930
<b>Total</b>	<b>306930</b>

## APPENDIX B

**Table 26: Services Planned 2002/2003**

Core Activity	Service Provider if not solely the YOT	Total Budget/Projected Costs
Preventive Services	Signpost/Safer Luton Partnership	90000
PACE Services		24000
Pre Court Services		32000
Court Based Services		75000
Remand Services		86000
Community Based Disposals		526000
Through Care/After Care		95000
Other Orders		24000

### Preventive Services

- Includes the cost of delivery services relating to accommodation, access to education, and employment; preventative initiatives such as Youth Inclusion Programme and Splash.

**Performance Measure One**

### Pace Services

- Cost of providing appropriate adult service and transfer of young people to emergency PACE beds.

**Performance Measure Twelve**

### Pre Court Services

- Resourcing of Final Warning Intervention programmes and provision of direct and indirect restorative justice services.

**Performance Measures Three and Five**

### Court Based Services

- Provision of Court Duty Officers, escorts for secure remands, Pre Sentence Reports for Court.

**Performance Measures Eight and Nine**

### Remand Services

- Provision on Bail Supervision, placement costs associated with Remands to Local Authority Accommodation, costs associated with through care provision for young people subject to Court Ordered Secure Remand or Remand in Custody.

**Performance Measures Four and Twelve**

## **APPENDIX B**

### **Community Based Services**

- Cost of delivering Referral Orders, Reparation Orders, community penalties including ISSP, provision of services supporting other statutory orders.  
**Performance Measures Two, Four, Five, Six, Eleven and Twelve**

### **Through Care and After Care**

- All work relating to Detention and Training Orders and Section 91/92 Orders.  
**Performance Measure Ten**

### **Other Orders**

- Costs associated with Parenting Order performance.  
**Performance Measure Seven**

## APPENDIX B

### ANNEX A

**Table 20: Re-offending Following Pre Court Decisions**

**First Cohort - 1.10.00 to 31.12.00**

<b>Police Decision</b>	<b>COHORT Number in 3 month Period ie Oct-Dec</b>	<b>COHORT Number Re-offending</b>	<b>COHORT Number Re-offending the same or more seriously</b>	<b>COHORT Re-offending either as frequently or more frequently</b>
Police Reprimand	93	22	16	6
Final Warning	12	3	0	0
Final Warning and Offending Programme	16	7	5	2
<b>TOTAL</b>	<b>121</b>	<b>32</b>	<b>21</b>	<b>8</b>

## APPENDIX B

### ANNEX A

**Table 20A: Re-offending Following Pre Court Decisions**

**Second Cohort - 1.10.01 to 31.12.01**

<b>Police Decision</b>	<b>COHORT Number in 3 month Period ie Oct-Dec</b>	<b>COHORT Number Re-offending</b>	<b>COHORT Number Re-offending the same or more seriously</b>	<b>COHORT Re-offending either as frequently or more frequently</b>
Police Reprimand	59			
Final Warning	9			
Final Warning and Offending Programme	35			
<b>TOTAL</b>	<b>103</b>	<b>0</b>	<b>0</b>	<b>0</b>

# APPENDIX B

## ANNEX A

**Table 21: Re-offending Following Sentence**

**First Cohort - 01.10.00 to 31.012.00**

SENTENCE	COHORT Number sentenced in 3 month Period ie Oct-Dec	COHORT Number Re-offending	COHORT Number Re-offending the same or more seriously	COHORT Number Re-offending either as frequently or more frequently
Referral Orders	0	0	0	0
Absolute Discharge	0	0	0	0
Conditional Discharge	20	10	2	4
Fine	13	8	5	1
Bind Over	0	0	0	0
Compensation Order	0	0	0	0
Reparation Order	0	0	0	0
Action Plan Order	13	6	3	1
Attendance Centre Order	10	7	3	2
Supervision Order	6	5	4	2
Supervision Order + Condition	0	0	0	0
Probation Order	0	0	0	0
Probation Order + Conditions	0	0	0	0
Community Service Order	2	1	0	0
Combination Order	3	3	1	0
Drug Treatment and Testing Order	0	0	0	0
Curfew Order	0	0	0	0
Detention and Training Order	12	7	1	1
Section 53	1	0	0	0
<b>TOTAL</b>	<b>80</b>	<b>47</b>	<b>19</b>	<b>11</b>

# APPENDIX B

## ANNEX A

**Table 21A: Re-offending Following Sentence**

**Second Cohort - 01.10.01 to 31.01.02**

SENTENCE	COHORT Number sentenced in 3 month Period ie Oct-Dec	COHORT Number Re-offending	COHORT Number Re-offending the same or more seriously	COHORT Number Re-offending either as frequently or more frequently
Referral Orders	0	0	0	0
Absolute Discharge	0	0	0	0
Conditional Discharge	15	0	0	0
Fine	25	0	0	0
Bind Over	0	0	0	0
Compensation Order	0	0	0	0
Reparation Order	0	0	0	0
Action Plan Order	4	0	0	0
Attendance Centre Order	3	0	0	0
Supervision Order	9	0	0	0
Supervision Order + Condition	0	0	0	0
Probation Order	1	0	0	0
Probation Order + Conditions	0	0	0	0
Community Service Order	5	0	0	0
Combination Order	1	0	0	0
Drug Treatment and Testing Order	0	0	0	0
Curfew Order	0	0	0	0
Detention and Training Order	8	0	0	0
Section 53	1	0	0	0
<b>TOTAL</b>	<b>72</b>	<b>0</b>	<b>0</b>	<b>0</b>

33



# APPENDIX B

## ANNEX A

**Table 24: Workload Measures/Performance Indicators**

Workload Measures/Performance Indicators	Number
<b>Offending (Annual Return)</b>	
The number of children and young people 'usually resident' offending during the previous calendar year.	593
Number of children 'looked after' offending (usually resident) as per the Quality Protects counting rules.	11
The number of 'children in need' offending.	0
The number of children 'looked after' offending.	11
<b>Pre Court (Quarterly Return)</b>	
The number of Final Warning Programmes concluded in the period	94
The number of young people successfully completing Final Warning Programmes in the period (ie those involving young people who have fully co-operated with the interventions provided).	71
The number of Final Warning Assessments completed in the period.	129
The number of victims consulted during Final Warning Assessments in the period.	59
The number of young people in the period involved in:	
(a) Indirect Reparation	3
(b) Direct Reparation	2
<b>Court Remands (Quarterly Return)</b>	
Total number of young people receiving a remand episode(s) in the period.	308
Total number of Court appearances scheduled in the period.	1440
Total number of attendances at scheduled Court appearances in the period.	1348
Total number of attendances at scheduled Court appearances by young people subject to either Bail Supervision and Support or a Remand to Local Authority Accommodation in the period.	43
Total number of young people subject to either Bail Supervision and Support or a Remand to Local Authority Accommodation in breach for non compliance in the period.	2
Total number of young people in the period charged with an offence allegedly committed during a remand episode.	72

## APPENDIX B

Workload Measures/Performance Indicators	Number
<b>Reports (Quarterly Return)</b>	
Congruence Rate for the general population.	115
Number of Reports prepared on the general Court population submitted (ie presented to the Court) within the number of working days of request as detailed by National Standards	65
Number of Reports prepared on the Persistent Young Offender population submitted (ie presented to the Court) within the number of working days of request as detailed by National Standards.	21
<b>Court Orders - Community Based (Quarterly Return)</b>	
The number of victims consulted in the period during Reparation Order process.	0
The number of young people in the period involved in:	
(a) Indirect Reparation	0
(b) Direct Reparation with the victim	1
The number of young people in the period on Community Penalties involved in:	
(a) Indirect Reparation	0
(b) Direct Reparation with the victim	0
Number of community penalties concluded during the period	79
Number of community penalties concluded successfully (ie without further offending) in the period.	46
Number of supervision plans for community penalties agreed between the young person and a YOT worker during the period.	81
<b>Court Orders - Custodial (Quarterly Returns)</b>	
Number of Detention and Training Orders concluded in the period.	33
Number of Detention and Training Orders concluded successfully in the period.	28
Number of Training Plans for Detention and Training Orders agreed in the period.	24
Number of Training Plans for Detention and Training Orders agreed within the working days detailed in National Standards in the period.	18

## APPENDIX B

Workload Measures/Performance Indicators	Number
<b>Enforcement of Court Orders (Quarterly Return)</b>	
Number of cases in the period which have resulted in Breach proceedings being instigated for unacceptable absences (as per National Standards) with respect to:	
(a) Reparation Orders	0
(b) Community Penalties	18
(c) Detention and Training Orders and Section 53	4
<b>Career Pattern of Offenders Taken to Court In the Period (Quarterly Return)</b>	
Direct Entrants (ie those with no previous Reprimands, Final Warnings, or convictions).	97
First Timers (ie those with only a previous Reprimand and/or Final Warning).	121
First Timers and Direct Entrants with guilty pleas.	56
Those with one previous sentencing occasion.	83
Those with two or more previous sentencing occasions (but who are not 'persistent offenders').	60
Those who are 'persistent young offenders'.	66
<b>Parenting Orders (Quarterly Return)</b>	
Number of Parenting Orders completed in the period.	3
Number completed successfully ie parent(s) in the period.	3
Number completed without child/young person re-offending during the course of the Order in the period.	3

# APPENDIX B

## ANNEX A

**Table 24a: The Thirteen Performance Measures**

	Performance Measure	Annual Data Period			
		2001	2002	2003	2004
One	Prevention				
	Number of Young People Involved in:	159			
a	Vehicle Crime	104			
b	Domestic Burglary	11			
c	Robbery	44			
Two	Recidivism Rates				
a	Pre Court	31			
b	First Tier Penalties	14			
c	Community Penalties	22			
d	Custodial Penalties	7			
Three	Final Warnings				
a	Total Number of Final Warnings (with and without interventions)	142			
b	Total Number of Final Warnings Supported by an Intervention	94			
c	Percentage of Final Warnings Supported by an Intervention	66%			
Four	Use Of The Secure Estate				
a	Total Number of Remand Episodes excluding Unconditional and Conditional Bail	47			
b	Total Number of Remand Episodes recorded as Court Ordered Secure Remand or Remand in Custody	18			
c	Court Ordered Secure Remands and Remands in Custody as a Percentage of Remand Episodes (excluding Unconditional and Conditional Bail)	38%			
d	Total number of sentences	293			
e	Total number of custodial sentences (Section 92 and DTOs)	34			
f	Custodial sentences as a percentage of all sentences	12%			
Five	Use Of Restorative Processes				
a	Total Number of Final Warnings Supported by an Intervention, Referral Orders and Community Penalties	94			
b	Total Number of Final Warnings Supported by an Intervention, Referral Orders and Community Penalties including direct or indirect reparation	6			
Six	Victim Satisfaction				
a	Number of Victims Consulted Not Participating In a Restorative Process	N/A			
b	Number of Victims Consulted Not Participating In a Restorative Process Expressing Satisfaction	N/A			
c	Percentage of Victims Consulted Not Participating In a Restorative Process Expressing Satisfaction	N/A			

## APPENDIX B

	Performance Measure	Annual Data Period			
		2001	2002	2003	2004
<b>d</b>	Number of Victims Consulted Participating In A Restorative Process	N/A			
<b>e</b>	Number of Victims Consulted Participating In A Restorative Process Expressing Satisfaction	N/A			
<b>f</b>	Percentage of Victims Consulted Participating In A Restorative Process Expressing Satisfaction	N/A			
<b>Seven</b>	<b>Parental Satisfaction</b>				
<b>a</b>	Number of Parents Starting and Completing Statutory Parenting Programmes	33			
<b>b</b>	Number of Parents Starting and Successfully Completing Parenting Programmes	9			
<b>c</b>	Percentage of Statutory Parenting Programmes Completed Successfully	27%			
<b>d</b>	Number of Parents Starting Statutory Parenting Programmes Completing Them Successfully Expressing Satisfaction	N/A			
<b>e</b>	Number of Parents Starting and Completing Voluntary Parenting Programmes	N/A			
<b>f</b>	Number of Parents Starting and Successfully Completing Voluntary Parenting Programmes	N/A			
<b>g</b>	Percentage of Voluntary Parenting Programme Completed Successfully	N/A			
<b>h</b>	Number of Parents Starting Voluntary Parenting Programmes Completing Them Successfully Expressing Satisfaction	N/A			
<b>Eight</b>	<b>ASSET</b>				
<b>a</b>	Number of Community Disposals Starting	208			
<b>b</b>	Number of Start ASSETs completed on those Starting Community Disposals	205			
<b>c</b>	Community Disposals Start ASSET Completion Rate (%)	99%			
<b>d</b>	Number of Community Disposals Concluding	168			
<b>e</b>	Number of End ASSETs completed on those Community Disposals Concluded	102			
<b>f</b>	Community Disposals End ASSET Completion Rate (%)	61%			
<b>g</b>	Number of DTOs Starting	32			
<b>h</b>	Number of Start ASSETs completed on those Starting DTOs	26			
<b>i</b>	DTOs Start ASSET Completion Rate (%)	81%			
<b>j</b>	DTOs-number of young people transferred back to the community	29			
<b>k</b>	Number of Middle ASSETs Completed	28			
<b>l</b>	DTO Middle ASSET Completion Rate (%)	97%			
<b>m</b>	Number of DTOs Concluded	19			
<b>n</b>	Number of End ASSETs completed on those DTOs Concluded	15			
<b>o</b>	DTOs End ASSET Completion Rate (%)	79%			

## APPENDIX B

	Performance Measure	Annual Data Period			
		2001	2002	2003	2004
Nine	Pre Sentence Reports				
a	Number of Pre Sentence Reports submitted on both the PYO and non PYO populations	115			
b	Number of Pre Sentence Reports submitted on both populations within timescales prescribed by National Standards	86			
c	Percentage submitted within timescales by National Standards	75%			
Ten	DTO Planning				
a	Number of DTOs Starting	34			
b	Number of DTO Initial Training Plans drawn up within timescales prescribed by National Standards	27			
c	Percentage submitted within timescales by National Standards	79%			
Eleven	Education, Training & Employment				
a	Number of young people concluding Final Warnings with Intervention Programme	92			
b	Number of young people concluding Final Warnings with Intervention Programme in full time education, training or employment	N/A			
c	Number of young people concluding Referral Orders	0			
d	Number of young people concluding Referral Orders in full time education, training or employment	N/A			
e	Number of young people concluding Reparation Orders	1			
f	Number of young people concluding Reparation Orders in full time education, training or employment	N/A			
g	Number of young people concluding Community Penalties	75			
h	Number of young people concluding Community Penalties in full time education, training or employment	N/A			
i	Number of young people concluding Detention and Training Orders	32			
j	Number of young people concluding Detention and Training Orders in full time education, training or employment	N/A			
Twelve	Accommodation				
a	Number of young people concluding community disposals and Detention and Training Orders	107			
b	Number of young people concluding community disposals and Detention and Training Orders assessed as living in satisfactory accommodation at conclusion of intervention	N/A			
c	Number of young people subject to a Detention and Training Order transferred to the community	19			
d	Number of young people subject to a Detention and Training Order transferred to the community have satisfactory accommodation at time of transfer	N/A			

## APPENDIX B

	Performance Measure	Annual Data Period			
		2001	2002	2003	2004
<b>Thirteen Mental Health</b>					
<b>a</b>	Number of young people assessed by Yot as manifesting acute mental health difficulties	N/A			
<b>b</b>	Number of young people assessed by Yot as manifesting acute mental health difficulties commenced assessment by CAMHS within 24 hours	N/A			
<b>c</b>	Number of young people assessed by Yot as manifesting acute mental health difficulties commenced assessment by CAMHS within 72 hours	N/A			
<b>c (i)</b>	Number of young people assessed by Yot as manifesting acute mental health difficulties commenced assessment by CAMHS within 5 days	N/A			
<b>d</b>	Number of young people assessed by Yot as manifesting non acute mental health difficulties	N/A			
<b>e</b>	Number of young people assessed by Yot as manifesting non acute mental health difficulties commenced assessment by CAMHS within 10 days	N/A			
<b>e (i)</b>	Number of young people assessed by Yot as manifesting non acute mental health difficulties commenced assessment by CAMHS within 15 days	N/A			
<b>f</b>	Number of young people assessed by Yot as manifesting non acute mental health difficulties commenced assessment by CAMHS within 20 days	N/A			

# APPENDIX B

## ANNEX B

### Targets 2002-2005

Tasks	Baseline	Year 1 Target 2002 - 2003	Year 2 Target 2003 - 2004	Year 3 Target 2004 - 2005	Resource Implication	Lead Group/ Agency	Supporting Agencies
1. Reduce the involvement of young people who receive a substantive outcome for:							
- vehicle crime by 20% by 2003 vehicle crime by 30% by 2004	104	83	73	68		YOT	Partnership
- domestic burglary by 8% by 2003 domestic burglary by 16% by 2004 domestic burglary by 25% by 2005	11	10	9	8		YOT	Partnership
2. Achieve a reduction in re-offending rates:							
- Pre-Court	31	30	29	28		YOT	Partnership
- First Tier Penalties	14	13	13	12			
- Community Penalties	22	21	21	20			
- Custodial Penalties	7	7	7	7			
by 3% by 2003 by 5% by 2004 by 8% by 2005							



## APPENDIX B

Tasks	Baseline	Year 1 Target 2002 - 2003	Year 2 Target 2003 - 2004	Year 3 Target 2004 - 2005	Resource Implication	Lead Group/ Agency	Supporting Agencies
3. Ensure Final Warnings are supported by intervention: 70% by 2003 80% by 2004	66	70%	80%	85%		YOT	Partnership
4. Reduce the use of the secure estate: – Remands to 30% of total number of remand episodes by 2004 – Custodial sentences to no more than 6% of sentences imposed by 2004	38  12	33%  9%	30%  6%	27%  5%		YOT	Partnership
5. Ensure restorative processes are used in: 60% of disposals by 2003 80% of disposals by 2004	48	60%	80%	90%		YOT	Partnership Victim Support
6. Ensure victims who have been consulted or participated in restorative processes are either satisfied or very satisfied with the outcome: 70% by 2004	Not available	60%	70%	80%		YOT	Partnership Victim Support

## APPENDIX B

Tasks	Baseline	Year 1 Target 2002 - 2003	Year 2 Target 2003 - 2004	Year 3 Target 2004 - 2005	Resource Implication	Lead Group/ Agency	Supporting Agencies
7. Ensure with respect to parenting programmes: 70% complete them 70% satisfied or very satisfied	Not available	70% 70%	70% 70%	70% 70%		YOT	Partnership
8. Ensure ASSET is completed for all young people subject to: - <b>Community Disposals</b> Start End  - <b>Detention &amp; Training Orders</b> Start Transfer End	99% 61%	100% 100%	100% 100%	100% 100%		YOT	Partnership
9. Ensure 90% of PSRs submitted to Court within: 10 working days for Persistent Young Offenders 15 working days for others	75%	90%	90%	90%		YOT	Partnership

## APPENDIX B

Tasks	Baseline	Year 1 Target 2002 - 2003	Year 2 Target 2003 - 2004	Year 3 Target 2004 - 2005	Resource Implication	Lead Group/ Agency	Supporting Agencies
10. Ensure all initial training plans drawn up within 10 working days	79%	100%	100%	100%		YOT/YOI	Partnership
11. Ensure young people supervised by the YOT are in either full time education, training or employment: 80% by 2003 90% by 2004	33%	80%	90%	95%		YOT/Lifelong Learning	Partnership Connexions
12. Ensure all young people subject to community interventions or on release from the secure estate have satisfactory accommodation	78%	100%	100%	100%		YOT/Housing and Social Services	Partnership
13. All young people, by 2004, who are assessed by ASSET as manifesting: - Acute mental health difficulties to be referred by YOTs to CAMHS for a formal assessment commencing within 5 working days. - non-acute mental health concerns should be referred by the YOT for an assessment, and engagement, commenced within 15 working days.	Not available	90%	100%			YOT/Health	Partnership